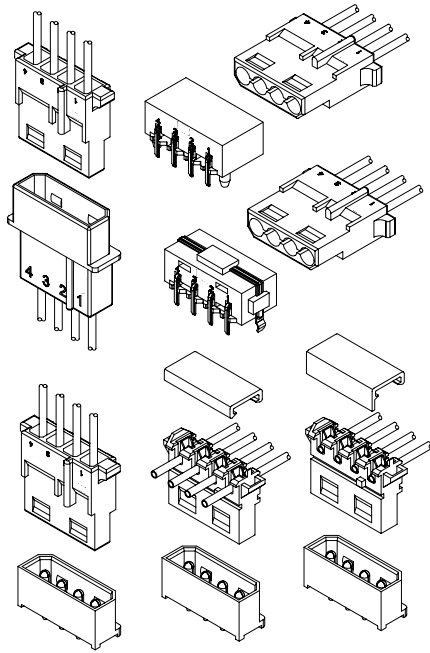




C5080 SERIES

5.08mm Pitch Wire to Wire and Wire to Board Connector

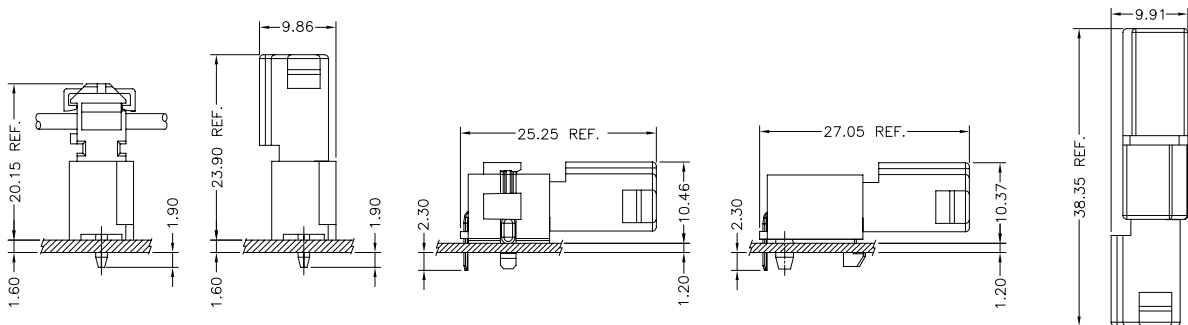


Specifications

Current Rating: 4A~10A AC,DC(Per Pin)
 Voltage Rating: 250V AC,DC(Per Pin)
 Temperature Range: -25°C ~ +85°C
 Contact Resistance: 10mΩ Max.
 Insulation Resistance: 1000MΩ Min.
 Withstanding Voltage: 1500V AC/minute

Standards

Assembly Layout



Ordering Code

① ② ③ ④ ⑤ ⑥
C5080 X-X X X-X

- ① Series No.
- ② Terminal Type: F=Female, M=Male
- ③ Plating Code: T=Tin-Plated
- ④ Material: B=Brass
- ⑤ E=Stamping Before Plating
- ⑥ Option Code: (Refer to Drawings)

① ② ③
C5080 XX-XP

- ① Series No.
- ② Housing Type: HF=Receptacle, HM=Plug, HI=I.D.C. Connector
- ③ No. of Circuits

① ② ③ ④
C5080 XX-X-XP

- ① Series No.
- ② Connector Type: WR=Right Angle, WV=Vertical
- ③ Blank=Normal Type, F=With Post
- ④ No. of Circuits

A
B
C
F



C5080 SERIES

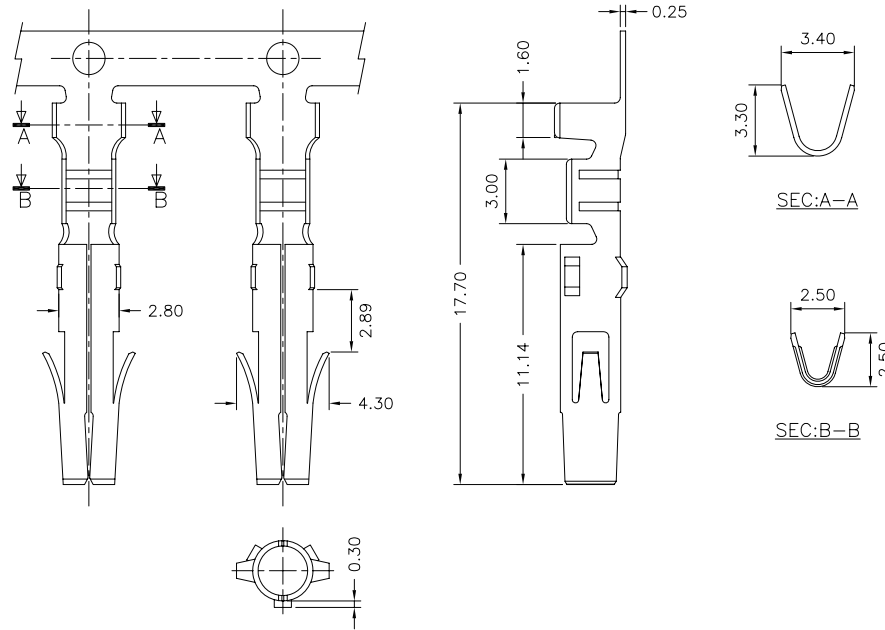
5.08mm Pitch Wire to Wire and Wire to Board Connector

C5080F-XXX

— 5.08mm Pitch Crimp Terminal —

Reference Information:

*Used in C5080HF Series Housing



Ordering Information & Specifications:

Unit:mm

Part No.	Wire Range	Insulation O.D.	Material	Finish	Qty/Reel
C5080F-TBE	AWG#18-#24	2.50mm(Max)	Brass	Tin-Plated	7,000Pcs

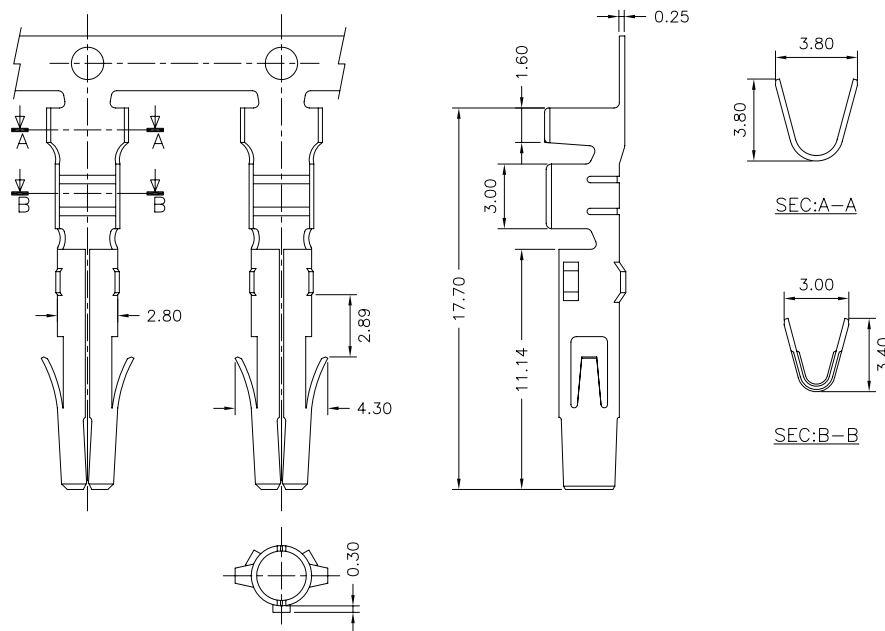
Note:E-Stamping Before Plating

C5080F-XXX

— 5.08mm Pitch Crimp Terminal —

Reference Information:

*Used in C5080HF Series Housing



Ordering Information & Specifications:

Unit:mm

Part No.	Wire Range	Insulation O.D.	Material	Finish	Qty/Reel
C5080F-TBE-H	AWG#14-#20	3.30mm(Max)	Brass	Tin-Plated	7,000Pcs

Note:E-Stamping Before Plating





C5080 SERIES

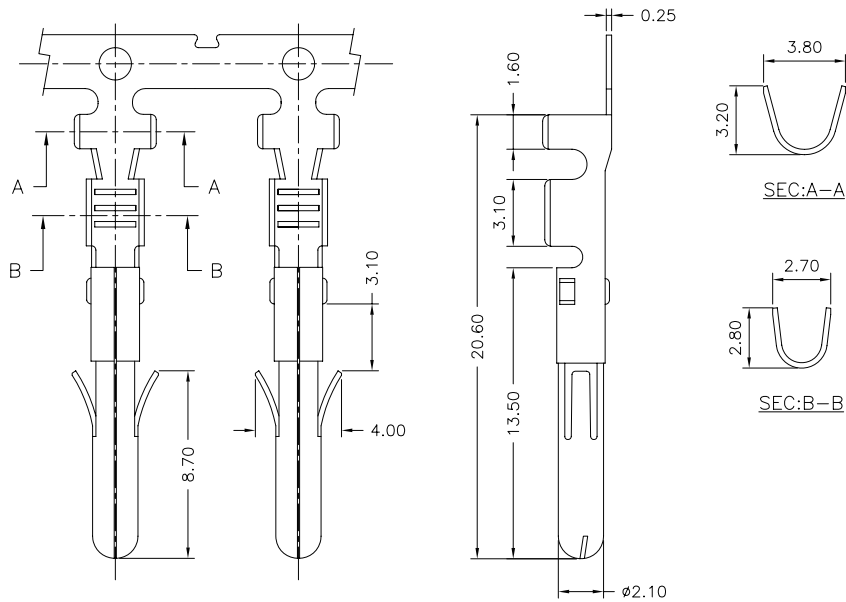
5.08mm Pitch Wire to Wire and Wire to Board Connector

C5080M-XXX

5.08mm Pitch Crimp Terminal

Reference Information:

*Used in C5080HM Series Housing



Ordering Information & Specifications:

Unit:mm

Part No.	Wire Range	Insulation O.D.	Material	Finish	Qty/Reel
C5080M-TBE	AWG#18-#24	2.50mm(Max)	Brass	Tin-Plated	7,000Pcs

Note:E-Stamping Before Plating

C5080HF-04P

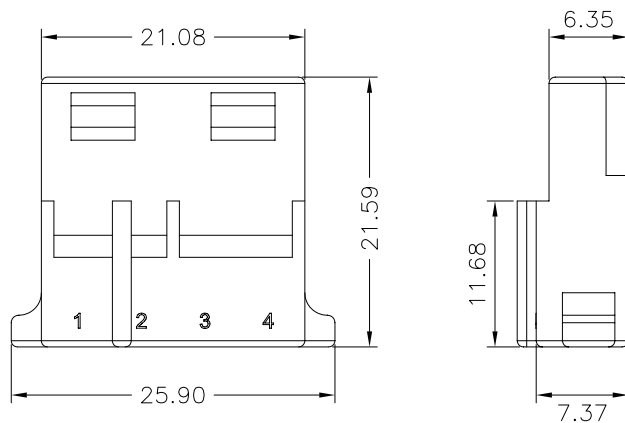
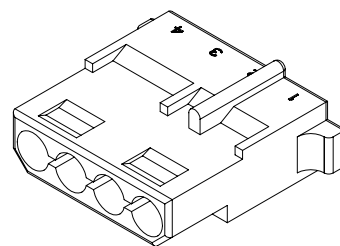
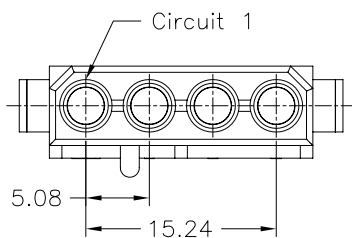
5.08mm Pitch Housing

Reference Information:

*Material: Thermoplastic

*Suitable C5080F Series Terminal

*Mates with C5080HM Series Housing or C5080 Series Wafer



C5080HF-XP		X	X	X	XX	X	XX	X
		①	②	③	④	⑤	⑥	⑦
①	Halogen Free or Not							
②	Material							
③	Color							
④	Plating Code for Contacts							
⑤	Plating Code							
⑥	Option Code							
⑦	Packing Code							



C5080 SERIES

5.08mm Pitch Wire to Wire and Wire to Board Connector

C5080HM-04P

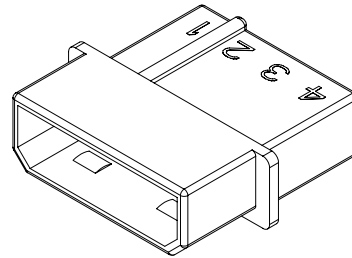
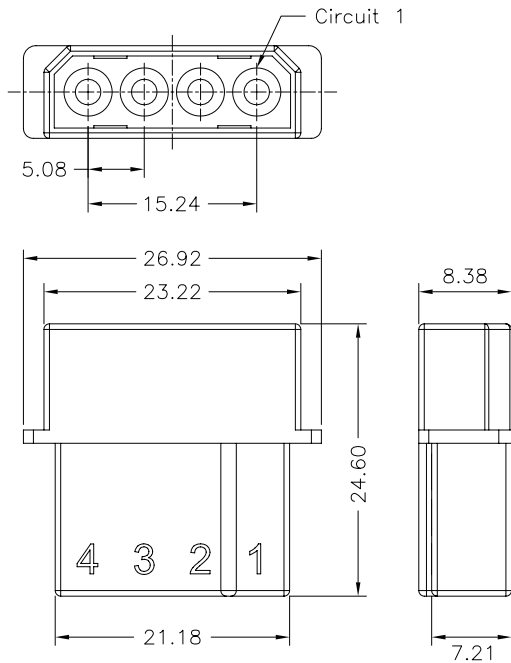
5.08mm Pitch Housing

Reference Information:

*Material: Thermoplastic

*Suitable C5080M Series Terminal

*Mates with C5080HF Series Housing or C5080HI Series I.D.C. Connector



C5080HM-XP	X	X	X	XX	X	XX	X
	①	②	③	④	⑤	⑥	⑦

① Halogen Free or Not
 ② Material
 ③ Color
 ④ Plating Code for Contacts
 ⑤ Plating Code
 ⑥ Option Code
 ⑦ Packing Code

A
B
C
F

C5080HI-04P

5.08mm Pitch Insulation Displacement Connector

Reference Information:

*Material: Terminal: Copper Alloy

Housing: Thermoplastic

Cap: Thermoplastic

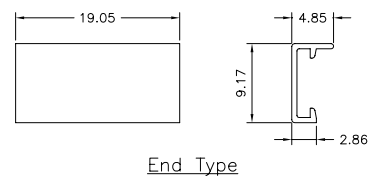
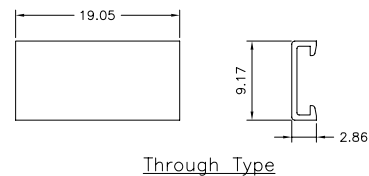
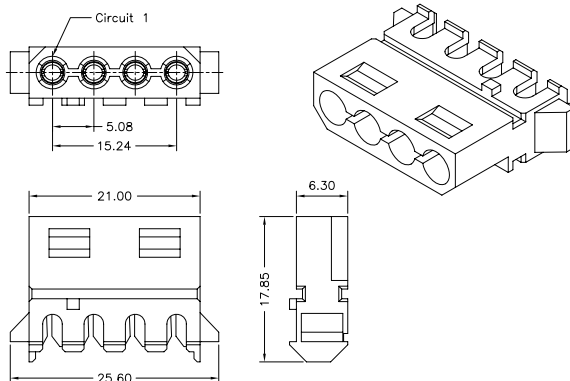
*Mates with C5080HM Series Housing or C5080 Series Wafer

C5080HI-XP	X	X	X	XX	X	XX	X
	①	②	③	④	⑤	⑥	⑦

① Halogen Free or Not
 ② Material
 ③ Color
 ④ Plating Code for Contacts
 ⑤ Plating Code
 ⑥ Option Code: 16=AWG#16, 18=AWG#18, 20=AWG#20, 22=AWG#22
 ⑦ Packing Code

C5080HI-XP	X	X	X	XX	X	XX	X
	①	②	③	④	⑤	⑥	⑦

① Halogen Free or Not
 ② Material
 ③ Color
 ④ Plating Code for Contacts
 ⑤ Plating Code
 ⑥ Option Code: C0=Through Type, CA=End Type
 ⑦ Packing Code





C5080 SERIES

5.08mm Pitch Wire to Wire and Wire to Board Connector

C5080WV-04P

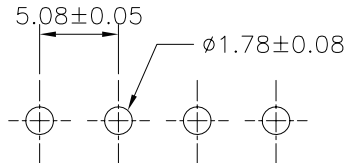
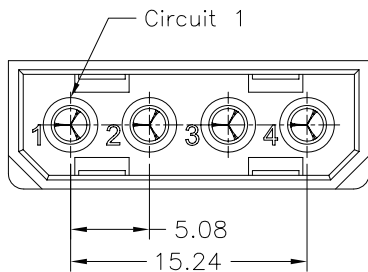
5.08mm Pitch 180° Wafer

Reference Information:

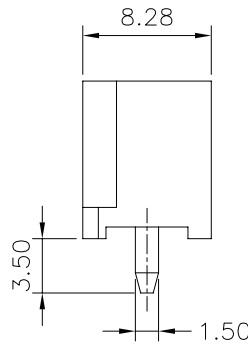
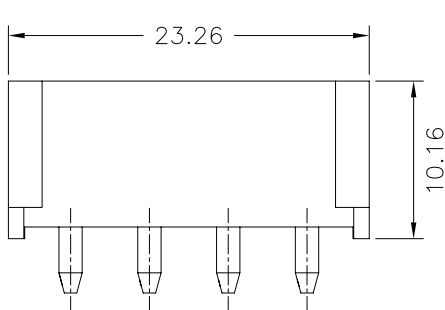
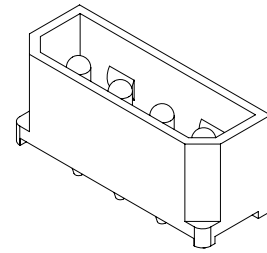
*Material: Pin: Copper Alloy

Wafer: Thermoplastic

*Mates with C5080HF Series Housing or C5080HI Series I.D.C. Connector



PCB Layout



C5080WV-XP		X	X	X	XX	X	XX	X
①	②	③	④	⑤	⑥	⑦		
① Halogen Free or Not ② Material ③ Color ④ Plating Code for Contacts ⑤ Plating Code ⑥ Option Code ⑦ Packing Code								

C5080WR-04P

5.08mm Pitch 90° Wafer

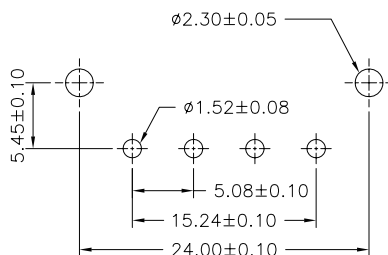
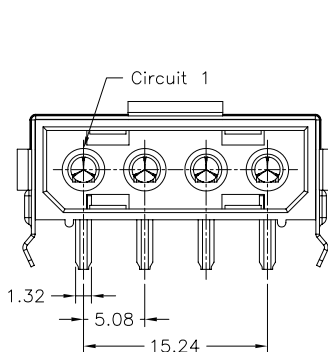
Reference Information:

*Material: Pin: Copper Alloy

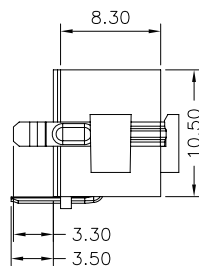
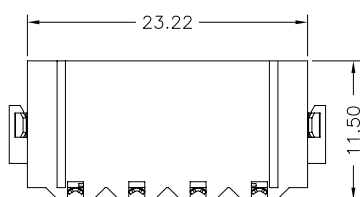
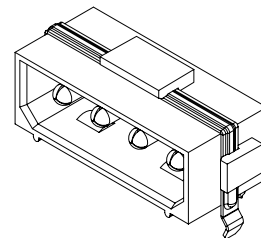
Metal Band: Copper Alloy

Wafer: Thermoplastic

*Mates with C5080HF Series Housing or C5080HI Series I.D.C. Connector



PCB Layout



C5080WR-XP		X	X	X	XX	X	XX	X
①	②	③	④	⑤	⑥	⑦		
① Halogen Free or Not ② Material ③ Color ④ Plating Code for Contacts ⑤ Plating Code ⑥ Option Code ⑦ Packing Code								

A
B
C
F



C5080 SERIES

5.08mm Pitch Wire to Wire and Wire to Board Connector

C5080WR-F-04P

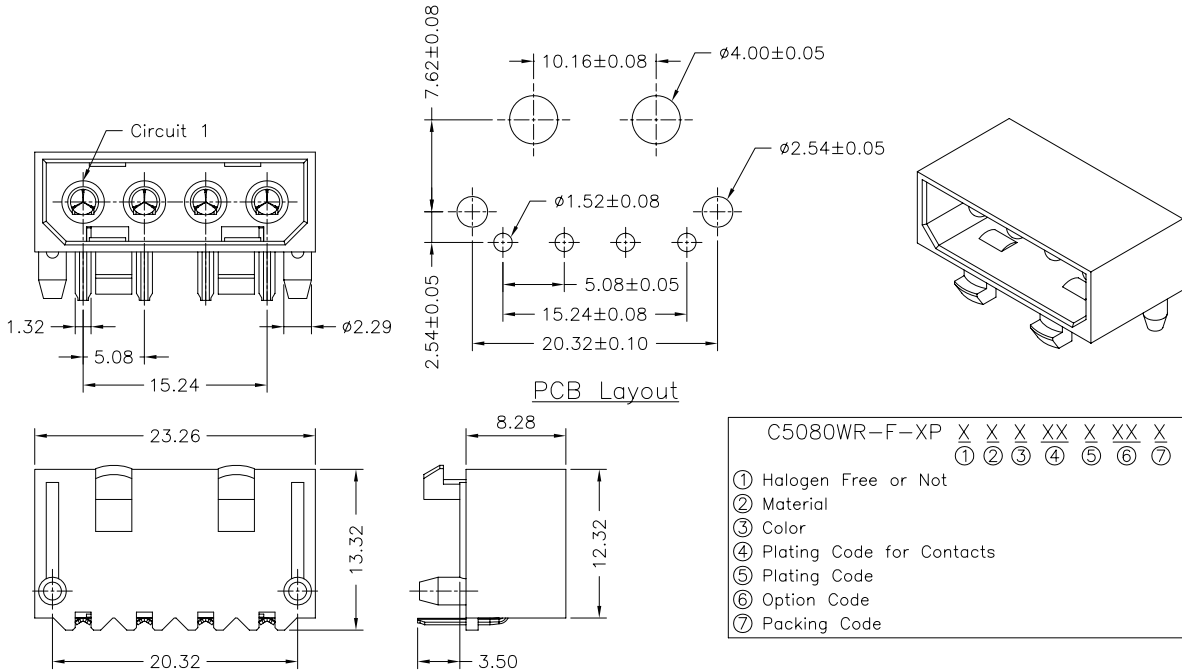
5.08mm Pitch 90° Wafer with Post

Reference Information:

*Material: Pin: Copper Alloy

Wafer: Thermoplastic

*Mates with C5080HF Series Housing or C5080HI Series I.D.C. Connector



A
B
C
F

C5080WR-04P

5.08mm Pitch 90° Wafer - Reverse Type

Reference Information:

*Material: Pin: Copper Alloy

Metal Band: Copper Alloy

Wafer: Thermoplastic

*Mates with C5080HF Series Housing or C5080HI Series I.D.C. Connector

