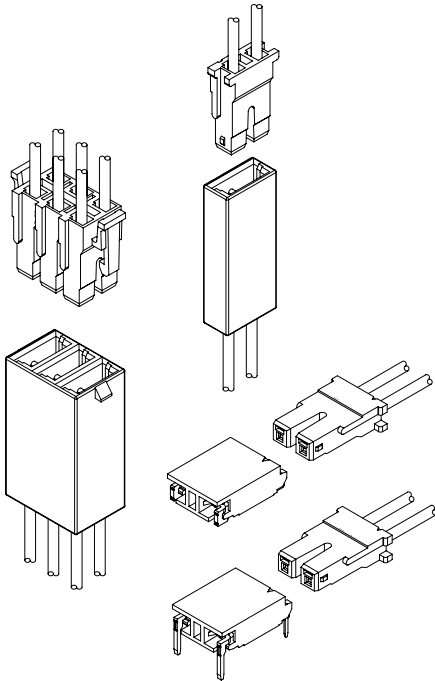




A3501 SERIES

3.50mm Pitch Wire to Board and Wire to Wire Connector



Specifications

Current Rating: 0.8A~1A AC,DC(Per Pin)

Voltage Rating: 1400V AC,DC(Per Pin)

Temperature Range: -25°C ~ +85°C

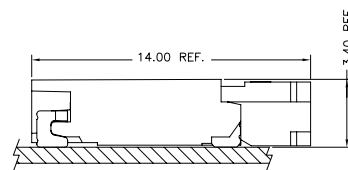
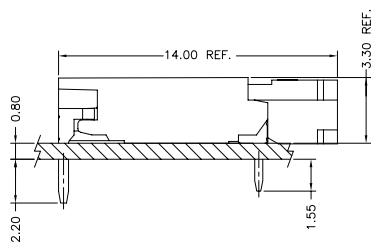
Contact Resistance: 10mΩ Max.

Insulation Resistance: 1000MΩ Min.

Withstanding Voltage: 3800V AC/minute

Standards

Assembly Layout



Ordering Code

① ② ③ ④ ⑤ ⑥
A3501 X-X X X-X

- ① Series No.
- ② Blank=Female, M=Male
- ③ Plating Code: T=Tin-Plated
- ④ Material: P=Phosphor Bronze
- ⑤ E=Stamping Before Plating
- ⑥ Option Code: (Refer to Drawings)

① ② ③ ④
A3501 XX-X-XP

- ① Series No.
- ② Connector Type: WR=Right Angle
- ③ Mounting Type: Blank=Through Hole, S=SMT
- ④ No. of Circuits

① ② ③ ④ ⑤
A3501 X X-2X NP

- ① Series No.
- ② Housing Type: H=Housing
- ③ Blank=Receptacle, M=Plug
- ④ Blank=Single Row, 2X=Dual Row
- ⑤ No. of Circuits



A3501 SERIES

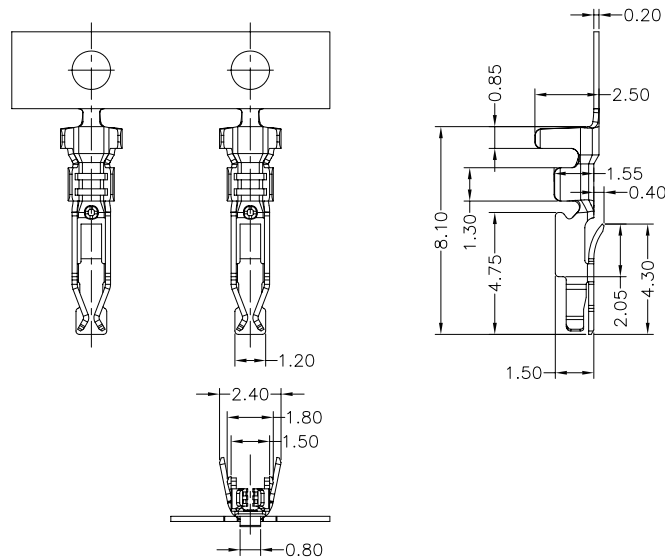
3.50mm Pitch Wire to Board and Wire to Wire Connector

A3501-XXX

3.50mm Pitch Crimp Terminal

Reference Information:

*Used in A3501H Series Housing



Ordering Information & Specifications:

Unit:mm

Part No.	Wire Range	Insulation O.D.	Material	Finish	Qty/Reel
A3501-TP	AWG#24-#28	1.60mm(Max)	Phosphor Bronze	Tin-Plated	10,000Pcs
A3501-TPE	AWG#24-#28	1.60mm(Max)	Phosphor Bronze	Tin-Plated	10,000Pcs

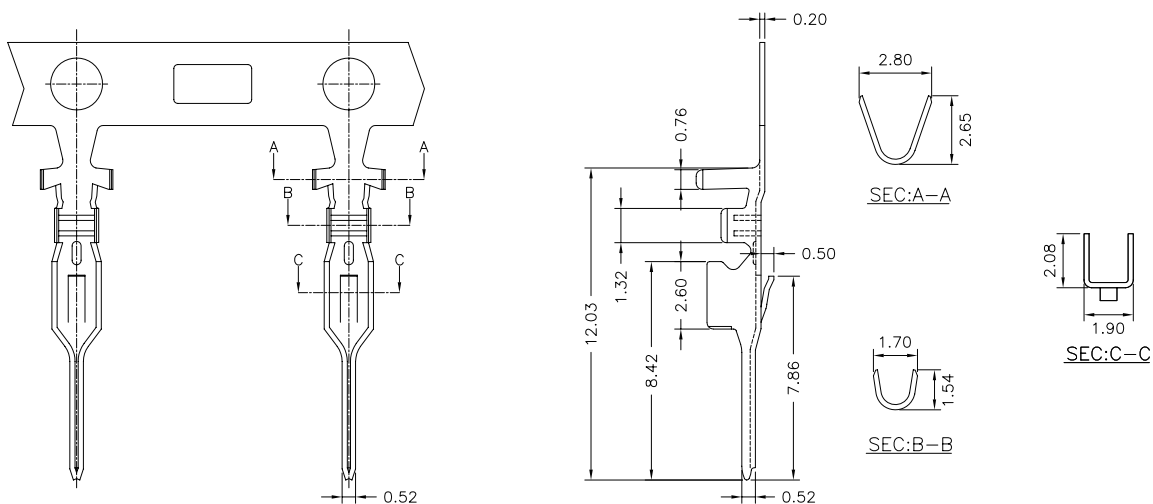
Note:E-Stamping Before Plating

A3501M-XXX

3.50mm Pitch Crimp Terminal

Reference Information:

*Used in A3501HM Series Housing

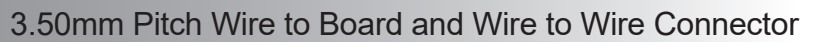


Ordering Information & Specifications:

Unit:mm

Part No.	Wire Range	Insulation O.D.	Material	Finish	Qty/Reel
A3501M-TPE	AWG#24-#28	1.80mm(Max)	Phosphor Bronze	Tin-Plated	5,000Pcs

Note:E-Stamping Before Plating



-3.50mm Pitch Crimp Terminal

*Used in A3501 HM Series Housing

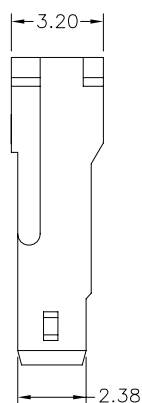
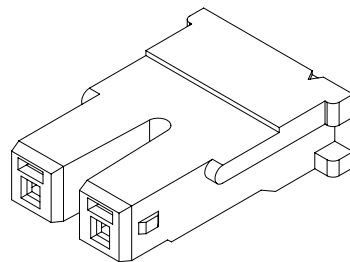


Unit:mm

Note:E-Stamping Before Plating

3.50mm Pitch Housing

- *Material: Thermoplastic
- *Suitable A3501 Series Terminal
- *Mates with A3501HM Series Housing or A3501 Series Wafer



A3501H-XP		X	X	X	XX	X	XX	X
		①	②	③	④	⑤	⑥	⑦
① Halogen Free or Not								
② Material								
③ Color								
④ Plating Code for Contacts								
⑤ Plating Code								
⑥ Option Code								
⑦ Packing Code								



A3501 SERIES

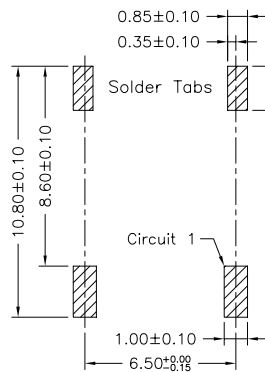
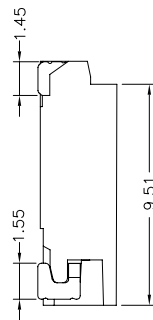
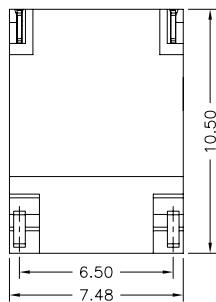
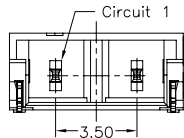
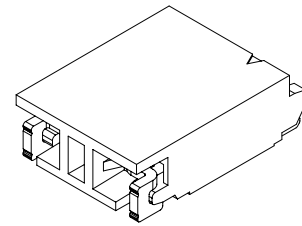
3.50mm Pitch Wire to Board and Wire to Wire Connector

A3501WR-S-02P

3.50mm Pitch 90° Wafer - SMT Type

Reference Information:

- *Material: Pin: Copper Alloy
Solder Tabs: Copper Alloy
Wafer: Thermoplastic
- *Mates with A3501H Series Housing



PCB Layout

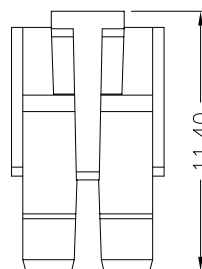
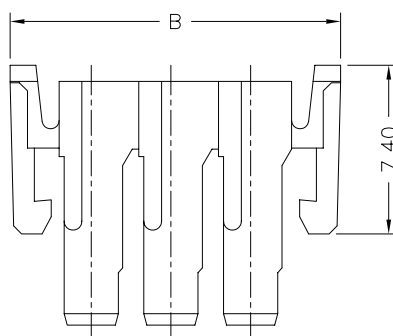
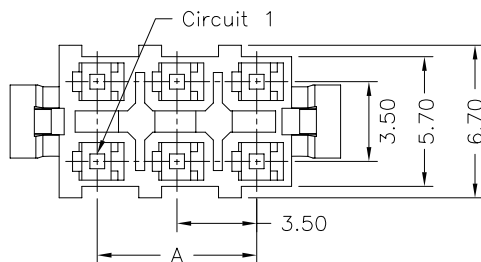
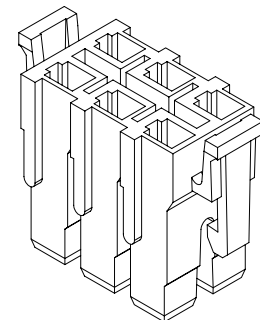
A3501WR-S-XP	X	X	X	XX	X	XX	X
	①	②	③	④	⑤	⑥	⑦
①	Halogen Free or Not						
②	Material						
③	Color						
④	Plating Code for Contacts						
⑤	Plating Code						
⑥	Option Code						
⑦	Packing Code						

A3501H-2

3.50mm Pitch Dual Row Housing

Reference Information:

- *Material: Thermoplastic
- *Suitable A3501 Series Terminal
- *Mates with A3501HM Series Dual Row Housing



A3501H-2XNP	X	X	X	XX	X	XX	X
	①	②	③	④	⑤	⑥	⑦
①	Halogen Free or Not						
②	Material						
③	Color						
④	Plating Code for Contacts						
⑤	Plating Code						
⑥	Option Code						
⑦	Packing Code						

Dimensions:

Circuit No.	Dimensions	
	A	B
2X03	7.00	14.50
2X06	17.50	25.00

Unit:mm



A3501 SERIES

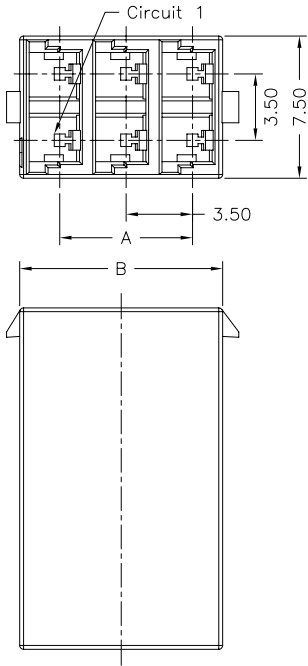
3.50mm Pitch Wire to Board and Wire to Wire Connector

A3501HM-2

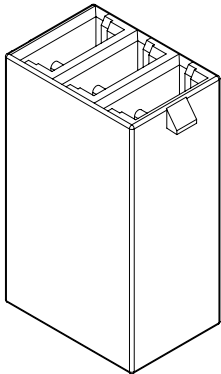
3.50mm Pitch Dual Row Housing

Reference Information:

- *Material: Thermoplastic
- *Suitable A3501M Series Terminal
- *Mates with A3501H Series Dual Row Housing



A3501HM-2XNP		X	X	X	XX	X	XX	X
		①	②	③	④	⑤	⑥	⑦
①	Halogen Free or Not							
②	Material							
③	Color							
④	Plating Code for Contacts							
⑤	Plating Code							
⑥	Option Code							
⑦	Packing Code							



Dimensions:

Circuit No.	Dimensions	
	A	B
2X03	7.00	10.70
2X06	17.50	21.20

Unit:mm