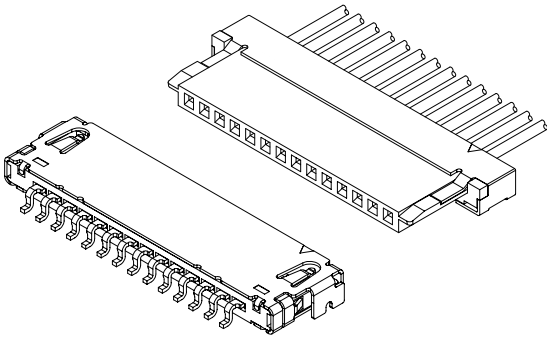




A1004 SERIES

1.00mm Pitch Wire to Board Connector

A
B
C
F



Specifications

Current Rating: 0.8A~1A AC,DC(Per Pin)

Voltage Rating: 100V AC,DC(Per Pin)

Temperature Range: -25°C ~ +85°C

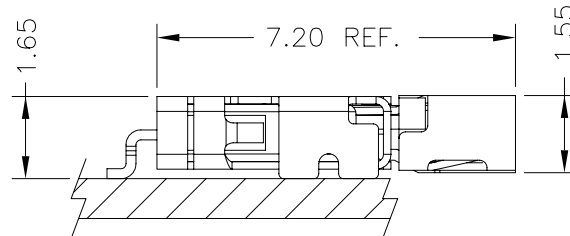
Contact Resistance: 30mΩ Max.

Insulation Resistance: 500MΩ Min.

Withstanding Voltage: 500V AC/minute

Standards

Assembly Layout



Ordering Code

① ② ③ ④
A1004 - X X X

- ① Series No.
- ② Plating Code: G=Gold-Plated
- ③ Material: P=Phosphor Bronze
- ④ E=Stamping Before Plating

① ② ③
A1004 X - XP

- ① Series No.
- ② Housing Type: H=Housing
- ③ No. of Circuits

① ② ③ ④
A1004 XX - X - XP

- ① Series No.
- ② Connector Type: WR=Right Angle
- ③ Mounting Type: S=SMT
- ④ No. of Circuits



A1004 SERIES

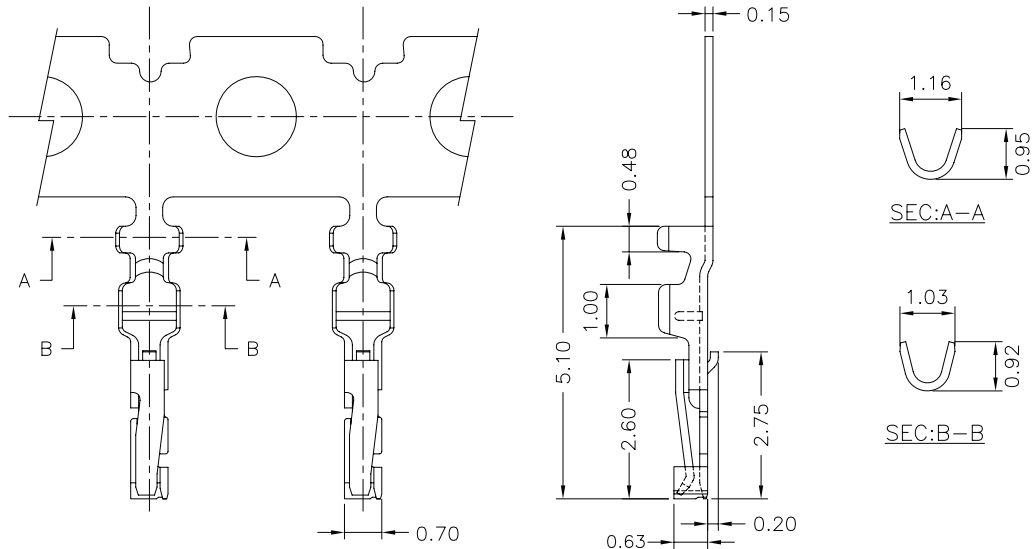
1.00mm Pitch Wire to Board Connector

A1004-XXX

1.00mm Pitch Crimp Terminal

Reference Information:

*Used in A1004 Series Housing



Ordering Information & Specifications:

Unit:mm

Part No.	Wire Range	Insulation O.D.	Material	Finish	Qty/Reel
A1004-GPE	AWG#28-#32	0.60mm(Max)	Phosphor Bronze	Gold-Plated 3u"	15,000Pcs
A1004-GPE-G1	AWG#28-#32	0.60mm(Max)	Phosphor Bronze	Gold-Plated 15u"	15,000Pcs

Note:E-Stamping Before Plating

A1004H

1.00mm Pitch Housing

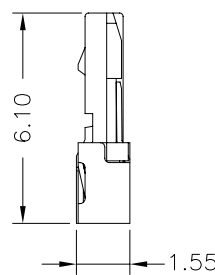
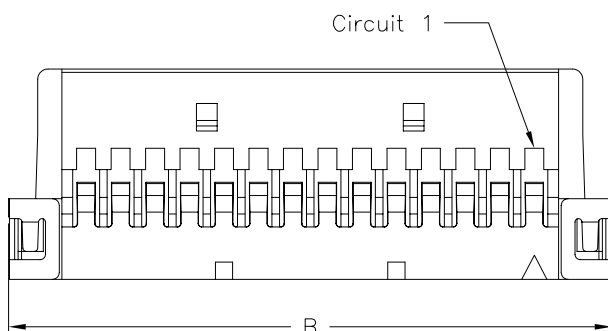
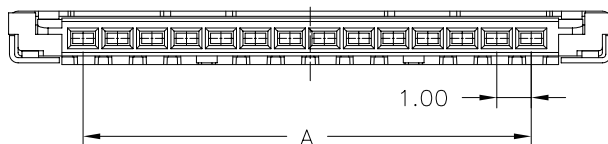
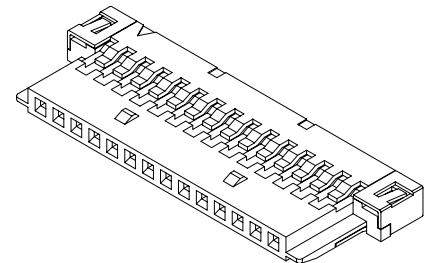
Reference Information:

*Material: Housing: Thermoplastic

Shell: Copper Alloy

*Suitable A1004 Series Terminal

*Mates with A1004 Series Wafer



A1004H-XP	X	X	X	XX	X	XX	X
	①	②	③	④	⑤	⑥	⑦
①	Halogen Free or Not						
②	Material						
③	Color						
④	Plating Code for Contacts						
⑤	Plating Code						
⑥	Option Code						
⑦	Packing Code						

Dimensions:

Circuit No.	Dimensions	
	A	B
08	7.00	11.50
14	13.00	17.50
20	19.00	23.50
30	29.00	33.50

Unit:mm



A 1004WR-S

Unit:mm